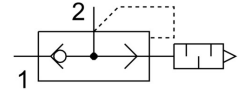


Quick exhaust valve SEU-1/4-NPT

Part number: 9799

FESTO



Data sheet

Feature	Value
Type code	SEU
Valve function	Quick exhaust
Selection of additional function	With pneumatic muffler
Pneumatic connection 1	1/4 NPT
Pneumatic connection 2	1/4 NPT
Type of mounting	Screw-in
Standard nominal flow rate exhaust air 6→5 bar	1100 l/min
Standard flow rate exhaust 6→0 bar	2300 l/min
Standard nominal flow rate pressurization 6→5 bar	960 l/min
Operating pressure	0.5 bar ... 10 bar
Ambient temperature	-20 °C ... 75 °C
Operating medium	Compressed air as per ISO 8573-1:2010 [7:-:-]
Nominal width	7 mm
Symbol	00991460
Information on operating and pilot media	Operation with oil lubrication possible (required for further use)
Temperature of medium	-20 °C ... 75 °C
Noise level	85 dB(A)
Note on materials	RoHS-compliant